

# ABOVE THE CREST

HOKUA'S QUARTERLY NEWSLETTER



## ALERT LABS LEAK DETECTION SYSTEM – PROJECT UPDATE

As of 10/4/24, Juliano and our Maintenance Team have completed the placement of all the sensors ("Floodies"). Since completing the placements, we have had twelve (12) water leak alerts, which were taken care of immediately, preventing damage to numerous units. Of these leaks, a majority would not have been caught until days later due to slow drips and location (AC closet, under refrigerator, dishwasher, etc.).

We are also preparing for the next phase of the project, which will involve the installation of the shut-off valves ("Shutties") by 535 Plumbing.

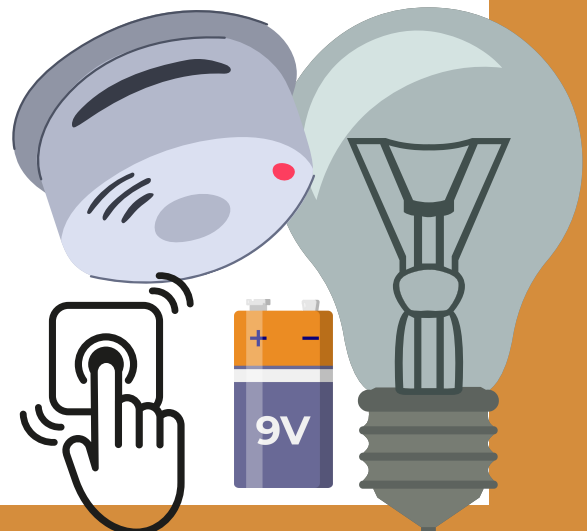
Further details, including the installation schedule, will be shared with residents in the coming weeks to ensure a seamless and well-coordinated process.

Your assistance and understanding throughout this important project have been invaluable, and we appreciate your continued patience as we work to enhance the building's leak detection system.

## REPLACEMENT PARTS – NEW PAYMENT OPTION

We're excited to introduce a new payment option for replacement parts! Starting Monday, October 7th, you can now charge replacement part purchases directly to your monthly maintenance fee account.

For those enrolled in Surepay, the charges will be applied automatically. This option is designed to make payments more convenient and streamlined.



## HOKUA'S HALLOWEEN SPOOKTACULAR!

We invite you to join us for an evening of spooktastic delights in our Main Lobby on Thursday, October 31st, from 4:00 PM to 5:00 PM.

- **Make and Take Treat Bags:** Enjoy creating your own treat bags with a selection of delicious candies and teal pumpkin non-edible goodies.
- **Pumpkin & Mask Decorating:** Get creative at our pumpkin & mask decoration stations. Easy and fun for all ages. We can't wait to see your spooky creations!
- **Photo Booth:** Capture the hauntingly good memories at our Halloween-themed photo booth with some special, surprise guests! Dress up in your spookiest, silliest, or most creative costumes and strike a pose.



We encourage all ages to participate in the fun by wearing your favorite Halloween costumes. Whether you prefer cute, creepy, or downright spooky attire, show off your Halloween spirit!

This event is suitable for residents of all ages, so feel free to bring the whole ohana! Let's make this Halloween a memorable one! We look forward to seeing you there!

## SHOPPING & ROLLING BASKET REMINDERS

Kindly remember to return shopping carts and rolling baskets to the parking level you retrieved them from. For your convenience, please refrain from storing them in your units, storage rooms, trash rooms, or outside your front door.

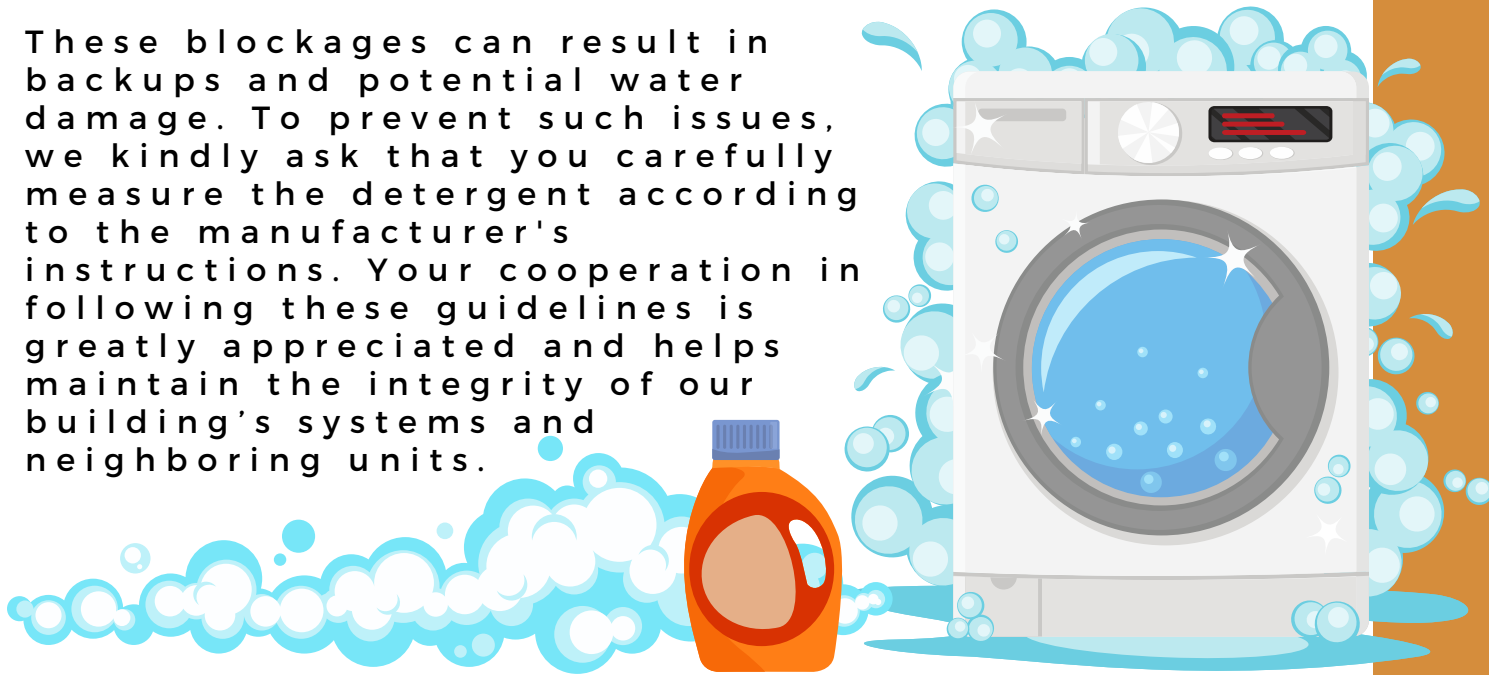
Should you require assistance, please contact the Front Desk, and our Residential Specialists will retrieve and return the cart for you.



## WASHING MACHINE LAUNDRY SOAP REMINDER

We would also like to remind residents about the proper use of laundry detergent in their washing machines. It is important to adhere to the recommended detergent requirements specific to your machine. Using too much detergent can lead to soap buildup, which may cause blockages in the washing machine and sink drain lines, particularly in lower floor units.

These blockages can result in backups and potential water damage. To prevent such issues, we kindly ask that you carefully measure the detergent according to the manufacturer's instructions. Your cooperation in following these guidelines is greatly appreciated and helps maintain the integrity of our building's systems and neighboring units.



## UNIT FRONT DOOR REMINDER

For the safety of all residents, we would like to remind you of a crucial aspect of fire safety regulations: keeping your unit's front door closed at all times. Under the Honolulu Fire Code, leaving your front door open, even partially, could result in a fire code violation and pose significant safety risks to you and your neighbors.

Open doors not only allow the potential spread of smoke and flames during a fire emergency, but they also compromise the integrity of fire-rated corridors designed to contain and slow the spread of fire.

We appreciate your cooperation in adhering to these regulations, as it helps to safeguard our community.



## MAINTENANCE TIP -DRANO, BLEACH, & YOUR DRAINS

Using bleach and products like Drano in plumbing drains presents several hazards:

- Bleach and Drano can react with substances in pipes, leading to clogs or damage.
- Mixing bleach with other cleaners can release toxic fumes, posing health risks
- Handle chemicals cautiously and follow specific recommendations to minimize risks.

Both bleach and Drano pose significant risks to a building's plumbing systems. It is recommended to seek safer alternatives for maintaining and clearing drains. For regular maintenance, consider hiring a licensed plumber to manually clean drain lines with a snake every five (5) years, reducing sludge and grease buildup.

**For a list of plumbers familiar with our property pick up a copy of our Vendor List in the mail area or visit our website.**



## UPCOMING IMPORTANT DATES

**Discoverer's Day**  
**Monday,**  
**October 14th**



**Thanksgiving Day**

**Thursday,**  
**November**  
**28th**



**Hot Hokuia Nites**  
**3rd Thursday of**  
**each month**



**October 17th**  
**November 21st**

## HOKUA CONTACTS

1288 Ala Moana Blvd. Suite 1A Honolulu, HI 96814

~ Phone.808.692.0000 ~ Fax 808.692.0001

General Manager, Ryan Benavente,ARM® | [ryan@hokua.net](mailto:ryan@hokua.net) | 808.692.0003

Operations Manager, Jon Eveland,ARM® | [jone@hokua.net](mailto:jone@hokua.net) | 808.692.0004

Executive Associate, Kristin Mori | [kristin@hokua.net](mailto:kristin@hokua.net) | 808.692.0002

Facilities Supervisor, Juliano Ahlstrand,ARM® | [juliano@hokua.net](mailto:juliano@hokua.net) | 808.692.0014

Hawaiiana Management, Eric Ambrozich | [erica@hmcmtg.com](mailto:erica@hmcmtg.com) | 808.593.6867

TruData Metering, Electrical Submetering | [jena@trudatametering.com](mailto:jena@trudatametering.com)